
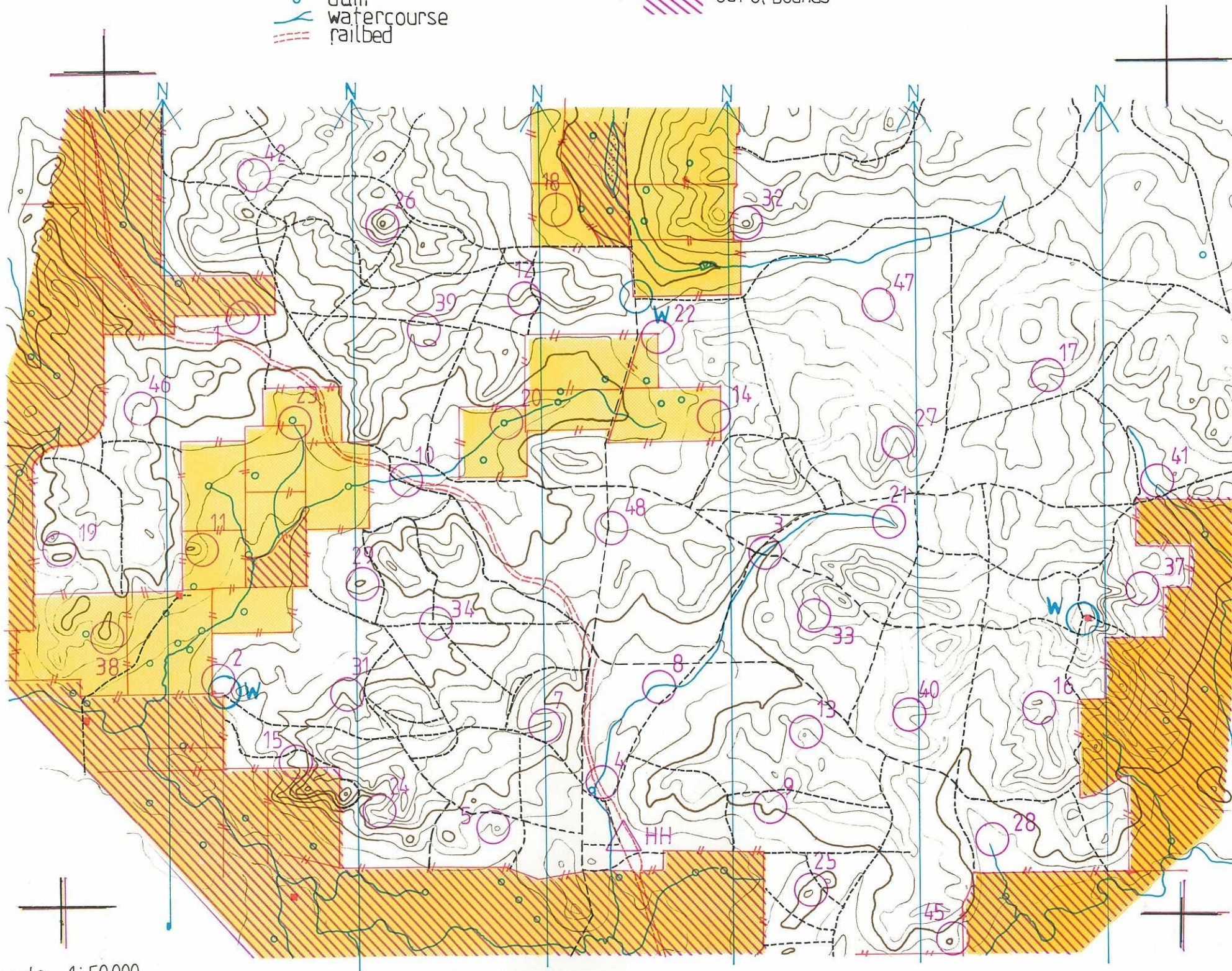


- Legend:
-  tracks, firebreaks
 -  paddocks
 -  fence
 -  buildings
 -  dam
 -  out of bounds
 -  watercourse
 -  railbed



scale 1:50,000
contours 10 M



JAMWOOD POST

setter: Paul Myers
 vetter: Eddie Hill
 map drawn by:
 Paul Myers

JAMWOOD POST

control descriptions 22/10/88

- 10 pts.
1. Pauls Bog
2. a small knoll
3. track and creek junction 172 degrees 100m.
4. under the bridge
5. a gully
- 20 pts.
7. a spur
8. creek bend
9. a spur
10. bridge
11. a spur
12. boulders
- 30 pts.
13. a knoll
14. lone tree on spur
15. boulder cluster
16. creek junction
17. head of creek
18. boulder cluster
- 40 pts.
19. saddle
20. clump of trees
21. head of creek
22. fence corner
23. dam
24. foot of cliff
- 50 pts.
25. a knoll
26. survey marker
27. a gully
28. a gully
29. top of a knoll
- 60 pts.
31. a spur
32. a knoll
33. head of a creek
34. N.E. corner of firebreak
- 70 pts.
37. upper part of shallow gully
38. top of cliff
39. rock surface 30m. x 10m.
40. saddle
41. vegetation boundary
42. gully
- 90 pts.
45. a knoll
46. re-entrant
47. broad gully
48. Jamwood Post 92 deg. 125m
- 2500 pts.
99. S.W. leg of main dish of
Parkes Radio Telescope.